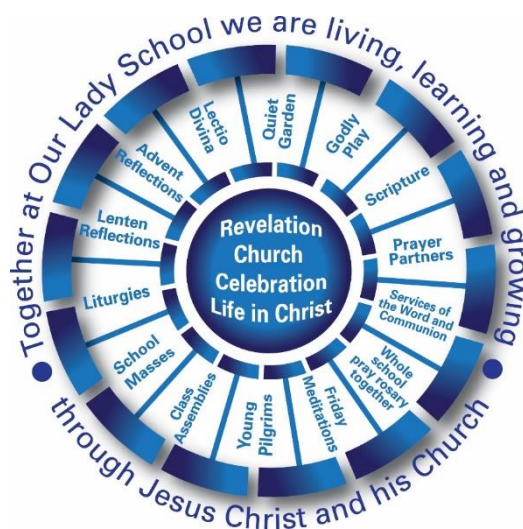




Our Lady Catholic Primary School

Supporting pupils with Medical Conditions Policy



February 2021

Our Lady Catholic School

Policy for Medical Conditions

1. Our Lady Catholic School is an inclusive community that aims to support and welcome pupils with medical conditions. It provides children with medical conditions with the same opportunities and access to activities (both school based and out-of-school) as other pupils. No child will be denied admission or prevented from taking up a place in this school because arrangements for their medical condition have not been made.
2. This school's medical conditions policy is drawn up in consultation with a wide-range of local key stakeholders within both the school and health settings.
3. The medical conditions policy is supported by a clear communication plan for staff, parents* and other key stakeholders to ensure its full implementation.
4. Staff understand and are trained in what to do in an emergency for the most common serious medical conditions at this school.
5. Staff understand and are trained in the school's general emergency procedures.
6. Our Lady Catholic School has clear guidance on the administration of medication at school.
7. Our Lady Catholic School has clear guidance on the storage of medication at school and this is contained within the Managing Medication in School policy.
8. Our Lady Catholic School has clear guidance about record keeping.
9. Our Lady Catholic School ensures that the whole school environment is inclusive and favourable to pupils with medical conditions. This includes the physical environment, as well as social, sporting and educational activities.
10. Our Lady Catholic School is aware of the common triggers that can make common medical conditions worse or can bring on an emergency. The school is actively working towards reducing or eliminating these health and safety risks and has a written schedule of reducing specific triggers to support this.
11. Each member of the school and health community knows their roles and responsibilities in maintaining and implementing an effective medical conditions policy.
12. The medical conditions policy is regularly reviewed, evaluated and updated. Updates are produced every year.

* The term 'parent' implies any person or body with parental responsibility such as foster parent, carer, guardian or local authority

All staff understand and are trained in what to do in an emergency for children with medical conditions at this school.

- All school staff, including temporary or supply staff, are aware of the medical conditions at this school and understand their duty of care to pupils in an emergency. Staff have a daily briefing which includes any need to know information.
- All staff receive training in what to do in an emergency and this is refreshed at least once a year as part of annual safeguarding updates. All staff receive First Aid training every 3 years.
- All children with medical conditions that are complex, long-term or where there is a high risk that emergency intervention will be required at this school have an individual healthcare plan (IHP)¹, which explains what help they need in an emergency. The IHP will accompany a pupil should they need to attend hospital. Parental permission will be sought and recorded in the IHP for sharing the IHP within emergency care settings.
- Our Lady School makes sure that all staff providing support to a pupil have received suitable training and ongoing support to ensure that they have confidence to provide the necessary support and that they fulfil the requirements set out in the pupil's IHP. Input should be provided by the specialist nurse/school nurse/other suitably qualified healthcare professional and/or parent/carer. The specialist nurse/school nurse/other suitably qualified healthcare professional will confirm their competence and this school keeps an up to date record of all training undertaken and by whom.
- If a pupil needs to attend hospital, a member of staff (preferably known to the pupil) will stay with them until a parent/carer arrives, or accompany a child taken to hospital by ambulance. They will not take pupils to hospital in their own car.

This school has clear guidance on providing care and support and administering medication at school.

- This school understands the importance of medication being taken and care received as detailed in the pupil's IHP.
- Medication will only be administered when it would be detrimental to a child's health or school attendance not to do so.
- This school will make sure that there are sufficient members of staff who have been trained to administer the medication and meet the care needs of an individual child. This includes escort staff for home to school transport if necessary. This school will

¹ An example template for an IHP has been produced by Dfe - see template A. <https://www.gov.uk/government/publications/supporting-pupils-at-school-with-medical-conditions--3>

ensure that there are sufficient numbers of staff trained to cover any absences, staff turnover and other contingencies. This school's governing body has made sure that there is the appropriate level of insurance and liability cover in place.

- Our Lady School will not give medication (prescription or non-prescription) to a child under 16 without a parent's written consent except in exceptional circumstances, and every effort will be made to encourage the pupil to involve their parent/carer, while respecting their confidentiality.

- When administering medication, for example pain relief, this school will check the maximum dosage and when the previous dose was given. Parents/carers will be informed.

- This school will make sure that a trained member of staff is available to accompany a pupil with a medical condition on an off-site visit, including overnight stays, however depending on the severity of need parents may be asked to accompany school trips.

- Parents/carers/carers at this school understand that they should let the school know immediately if their child's needs change.

- If a pupil misuses their medication, or anyone else's, their parent/carer is informed as soon as possible and the school's disciplinary procedures are followed.

Our Lady School has clear guidance on the storage of medication and equipment at school.

- Our Lady School makes sure that all staff understand what constitutes an emergency for an individual child and makes sure that emergency medication/equipment, eg asthma inhalers, epi-pens etc are readily available wherever the child is in the school and on off-site activities, and are not locked away.

- Pupils may not carry controlled drugs. Staff at Our Lady School can administer a controlled drug to a pupil once they have had specialist training.

- Our Lady School will make sure that all medication is stored safely, and that pupils with medical conditions know where they are at all times and have access to them immediately. Under no circumstances will medication be stored in first aid boxes.

- Our Lady School will only accept medication that is in date, labelled and in its original container including prescribing instructions for administration. The exception to this is insulin, which though must still be in date, will generally be supplied in an insulin injector pen or a pump.

- Parents/carers/carers are asked to collect all medications/equipment at the end of the school term, and to provide new and in-date medication at the start of each term.

- This school disposes of needles and other sharps in line with local policies. Sharps boxes are kept securely at school and will accompany a child on off-site visits. They are collected and disposed of in line with local authority procedures.

This school has clear guidance about record keeping.

- As part of the school's admissions process and annual data collection exercise parents/carers are asked if their child has any medical conditions. These procedures also cover transitional arrangements between schools.

- This school uses an IHP to record the support an individual pupil needs around their medical condition. The IHP is developed with the pupil (where appropriate), parent/carer, designated named member of school staff, specialist nurse (where appropriate) and relevant healthcare services. Where a child has SEN but does not have a statement or EHC plan, their special educational needs are mentioned in their IHCP. Appendix 2 is used to identify and agree the support a child needs and the development of an IHCP.

- Our Lady School has a centralised register of IHPs, and an identified member of staff has the responsibility for this register.

- IHPs are regularly reviewed, at least every year or whenever the pupil's needs change.

- The pupil (where appropriate) parents/carers, specialist nurse (where appropriate) and relevant healthcare services hold a copy of the IHP. Other school staff are made aware of and have access to the IHP for the pupils in their care.

- Our Lady School makes sure that the pupil's confidentiality is protected.

- Our Lady School seeks permission from parents/carers before sharing any medical information with any other party.

- Our Lady School keeps an accurate record of all medication administered, including the dose, time, date and supervising staff.

This school ensures that the whole school environment is inclusive and favourable to pupils with medical conditions which includes the physical environment, as well as social, sporting and educational activities.

- Our Lady School is committed to providing a physical environment accessible to pupils with medical conditions and pupils are consulted to ensure this accessibility. This school is also committed to an accessible physical environment for out-of-school activities.

- Our Lady School makes sure the needs of pupils with medical conditions are adequately considered to ensure their involvement in structured and unstructured activities, extended school activities and residential visits.

- All staff are aware of the potential social problems that pupils with medical conditions may experience and use this knowledge, alongside the school's anti bullying policy, to help prevent and deal with any problems. They use opportunities such as PSHE and science lessons to raise awareness of medical conditions to help promote a positive environment.

- Our Lady School understands the importance of all pupils taking part in off site visits and physical activity and that all relevant staff make reasonable and appropriate adjustments to such activities in order they are accessible to all pupils. This includes out-of-school clubs and team sports. Risk assessments will be conducted as part of the planning process to take account of any additional controls required for individual pupil needs. Depending on the level of need of a child, parents may be asked to accompany off sites visits.

- Our Lady School understands that all relevant staff are aware that pupils should not be forced to take part in activities if they are unwell. They should also be aware of pupils who have been advised to avoid/take special precautions during activity, and the potential triggers for a pupil's medical condition when exercising and how to minimise these.

Our Lady Catholic School makes sure that pupils have the appropriate medication/equipment/food with them during physical activity and offsite visits.

- Our Lady School makes sure that pupils with medical conditions can participate fully in all aspects of the curriculum and enjoy the same opportunities at school as any other child, and that appropriate adjustments and extra support are provided.

- All school staff understand that frequent absences, or symptoms, such as limited concentration and frequent tiredness, may be due to a pupil's medical condition.

- Our Lady School will not penalise pupils for their attendance if their absences relate to their medical condition.

- Our Lady School will refer pupils with medical conditions who are finding it difficult to keep up educationally to the SENCO/INCO who will liaise with the pupil (where appropriate), parent/carer and the pupil's healthcare professional.

- Pupils at this school learn what to do in an emergency.

- Our Lady School makes sure that a risk assessment is carried out before any out-of-school visit, including work experience and educational placements. The needs of pupils with medical conditions are considered during this process and plans are put in place for any additional medication, equipment or support that may be required

Our Lady Catholic School is aware of the common triggers that can make common medical conditions worse or can bring on an emergency. The school is actively working towards reducing or eliminating these health and safety risks and has a written schedule of reducing specific triggers to support this.

- Our Lady School is committed to identifying and reducing triggers both at school and on out-of-school visits.
- School staff have been given training and written information on medical conditions which includes avoiding/reducing exposure to common triggers.
- The IHP details an individual pupil's triggers and details how to make sure the pupil remains safe throughout the whole school day and on out-of-school activities. Risk assessments are carried out on all out-of-school activities, taking into account the needs of pupils with medical needs.
- Our Lady Catholic School reviews all medical emergencies and incidents to see how they could have been avoided, and changes school policy according to these reviews.

Each member of the school and health community knows their roles and responsibilities in maintaining and implementing an effective medical conditions policy.

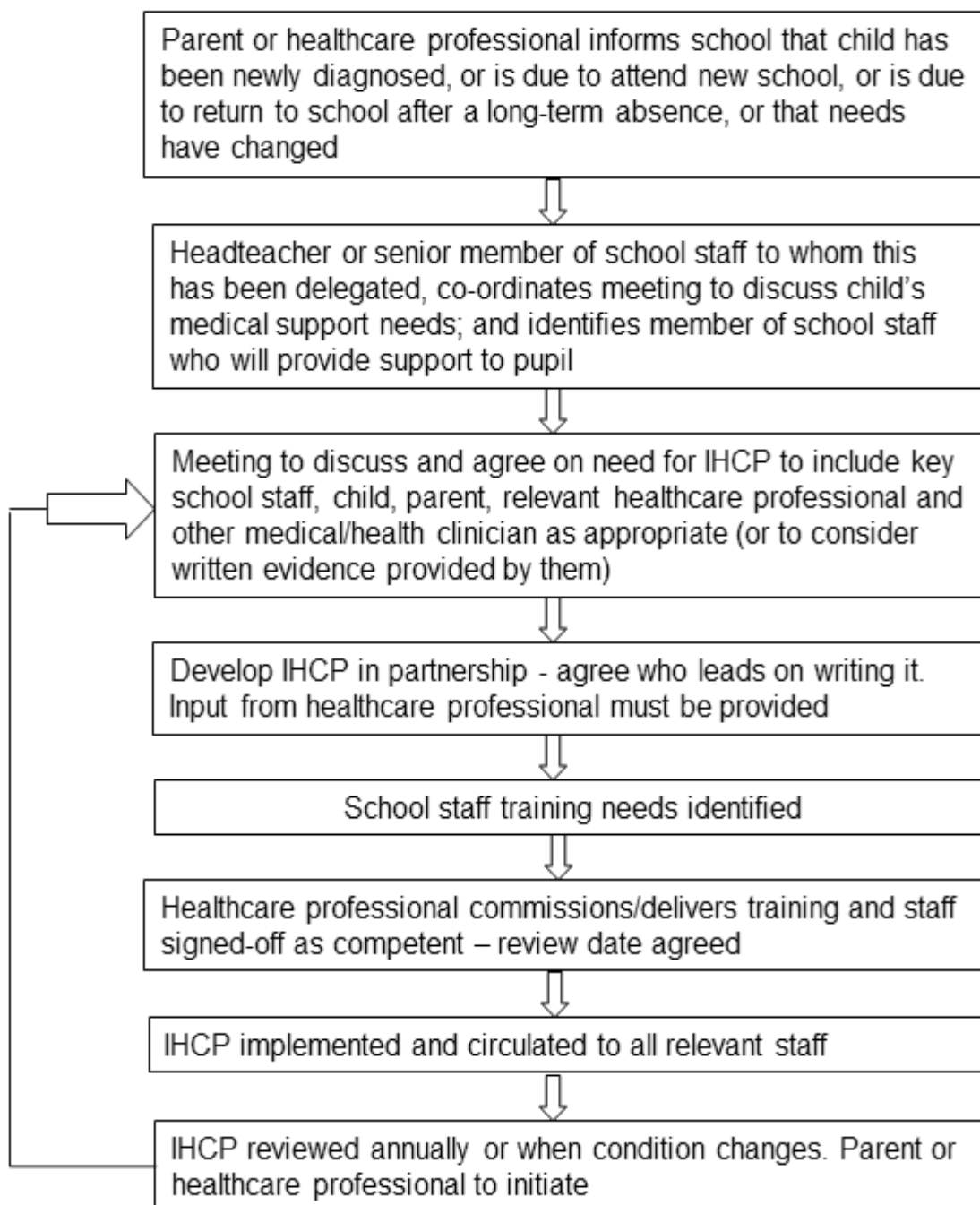
- Our Lady School works in partnership with all relevant parties including the pupil (where appropriate), parent/carer, school's governing body, all school staff, employers and healthcare professionals to ensure that the policy is planned, implemented and maintained successfully.
- Key roles and responsibilities are outlined in Appendix 1.

The medical conditions policy is regularly reviewed, evaluated and updated. Updates are produced every year.

- In evaluating the policy, this school seeks feedback from key stakeholders including pupils, parents/carers, school nurses, specialist nurses and other relevant healthcare professionals, school staff, local emergency care services and governors. The views of pupils with medical conditions are central to the evaluation process.

Should parents and pupils be dissatisfied with the support provided they should discuss these concerns to the Headteacher.

Appendix 1
Model process for developing individual healthcare plans



Appendix 2

Roles and responsibilities

Governing bodies – must make arrangements to support pupils with medical conditions in school, including making sure that this policy for supporting pupils with medical conditions in school is developed and implemented. They should ensure that pupils with medical conditions are supported to enable the fullest participation possible in all aspects of school life. Governing bodies should ensure that sufficient staff have received suitable training and are competent before they take on responsibility to support children with medical conditions. They should also ensure that any members of school staff who provide support to pupils with medical conditions are able to access information and other teaching support materials as needed.

Headteacher – should ensure that their school's policy is developed and effectively implemented with partners. This includes ensuring that all staff are aware of the policy for supporting pupils with medical conditions and understand their role in its implementation. Headteachers should ensure that all staff who need to know are aware of the child's condition. They should also ensure that sufficient trained numbers of staff are available to implement the policy and deliver against all individual healthcare plans, including in contingency and emergency situations. Headteachers have overall responsibility for the development of individual healthcare plans. They should also make sure that school staff are appropriately insured and are aware that they are insured to support pupils in this way. They should contact the school nursing service in the case of any child who has a medical condition that may require support at school, but who has not yet been brought to the attention of the school nurse.

School staff – any member of school staff may be asked to provide support to pupils with medical conditions, including the administering of medicines, although they cannot be required to do so. Although administering medicines is not part of teachers' professional duties, they should take into account the needs of pupils with medical conditions that they teach. School staff should receive sufficient and suitable training and achieve the necessary level of competency before they take on responsibility to support children with medical conditions. Any member of school staff should know what to do and respond accordingly when they become aware that a pupil with a medical condition needs help.

School nurse – every school has access to school nursing services. They are responsible for notifying the school when a child has been identified as having a medical condition which will require support in school. Wherever possible, they will do this before the child starts at the school. They would not usually have an extensive role in ensuring that schools are taking appropriate steps to support children with medical conditions, but may support staff on implementing a child's individual healthcare plan and provide advice and liaison, for example on training. School nurses can liaise with lead clinicians locally on appropriate support for the child and associated staff training needs - for example, there are good models of

local specialist nursing teams offering training to local school staff, hosted by a local school. Community nursing teams will also be a valuable potential resource for a school seeking advice and support in relation to children with a medical condition.

Other healthcare professionals - including GPs, paediatricians, nurse specialists/community paediatric nurses – should notify the school nurse and work jointly when a child has been identified as having a medical condition that will require support at school. They may provide advice on developing healthcare plans. Anyone dealing with the medical care of a pupil in school should contact the named school nurse for that school to ensure a coordinated approach.

Pupils – with medical conditions will often be best placed to provide information about how their condition affects them. They should be fully involved in discussions about their medical support needs and contribute as much as possible to the development of, and comply with, their individual healthcare plan. Other pupils will often be sensitive to the needs of those with medical conditions.

Parents/carers – should provide the school with sufficient and up-to-date information about their child's medical needs. They may in some cases be the first to notify the school that their child has a medical condition. Parents/carers are key partners and should be involved in the development and review of their child's individual healthcare plan, and may be involved in its drafting. They should carry out any action they have agreed to as part of its implementation, eg provide medicines and equipment and ensure they or another nominated adult are contactable at all times.

Template A: individual healthcare plan



Name of school/setting

Child's name

Group/class/form

Date of birth

Child's address

Medical diagnosis or condition

Date

Review date

Family Contact Information

Name

Phone no. (work)

(home)

(mobile)

Name

Relationship to child

Phone no. (work)

(home)

(mobile)

Clinic/Hospital Contact

Name

Phone no.

G.P.

Name

Phone no.

Who is responsible for providing support in school

--

Describe medical needs and give details of child's symptoms, triggers, signs, treatments, facilities, equipment or devices, environmental issues etc

Name of medication, dose, method of administration, when to be taken, side effects, contra-indications, administered by/self-administered with/without supervision

Daily care requirements

Specific support for the pupil's educational, social and emotional needs

Arrangements for school visits/trips etc

Other information

Describe what constitutes an emergency, and the action to take if this occurs

Who is responsible in an emergency (*state if different for off-site activities*)

Plan developed with

Staff training needed/undertaken – who, what, when

Form copied to

Template B: parental agreement for setting to administer medicine

The school/setting will not give your child medicine unless you complete and sign this form, and the school or setting has a policy that the staff can administer medicine.

Date for review to be initiated by	
Name of school/setting	
Name of child	
Date of birth	
Group/class/form	
Medical condition or illness	

Medicine

Name/type of medicine <i>(as described on the container)</i>	
Expiry date	
Dosage and method	
Timing	
Special precautions/other instructions	
Are there any side effects that the school/setting needs to know about?	
Self-administration – y/n	
Procedures to take in an emergency	

NB: Medicines must be in the original container as dispensed by the pharmacy

Contact Details

Name	
Daytime telephone no.	
Relationship to child	
Address	
I understand that I must deliver the medicine personally to	[agreed member of staff]

The above information is, to the best of my knowledge, accurate at the time of writing and I give consent to school/setting staff administering medicine in accordance with the school/setting policy. I will inform the school/setting immediately, in writing, if

there is any change in dosage or frequency of the medication or if the medicine is stopped.

Signature(s) _____ Date _____

Template C: record of medicine administered to an individual child

Name of school/setting	
Name of child	
Date medicine provided by parent	
Group/class/form	
Quantity received	
Name and strength of medicine	
Expiry date	
Quantity returned	
Dose and frequency of medicine	

Staff signature _____

Signature of parent _____

Date			
Time given			
Dose given			
Name of member of staff			
Staff initials			

Date			
Time given			
Dose given			
Name of member of staff			
Staff initials			

C: Record of medicine administered to an individual child (Continued)

Date

Time given

Dose given

Name of member of staff

Staff initials

Date

Time given

Dose given

Name of member of staff

Staff initials

Date

Time given

Dose given

Name of member of staff

Staff initials

Date

Time given

Dose given

Name of member of staff

Staff initials

Template E: staff training record – administration of medicines

Name of school/setting	
Name	
Type of training received	
Date of training completed	
Training provided by	
Profession and title	

I confirm that [name of member of staff] has received the training detailed above and is competent to carry out any necessary treatment. I recommend that the training is updated [name of member of staff].

Trainer's signature _____

Date _____

I confirm that I have received the training detailed above.

Staff signature _____

Date _____

Suggested review date _____

Template F: contacting emergency services

Request an ambulance - dial 999, ask for an ambulance and be ready with the information below.

Speak clearly and slowly and be ready to repeat information if asked.

1. your telephone number
2. your name

3. your location as follows [insert school/setting address]
4. state what the postcode is – please note that postcodes for satellite navigation systems may differ from the postal code
5. provide the exact location of the patient within the school setting
6. provide the name of the child and a brief description of their symptoms
7. inform Ambulance Control of the best entrance to use and state that the crew will be met and taken to the patient
8. put a completed copy of this form by the phone

Template G: model letter inviting parents to contribute to individual healthcare plan development

Dear Parent

DEVELOPING AN INDIVIDUAL HEALTHCARE PLAN FOR YOUR CHILD

Thank you for informing us of your child's medical condition. I enclose a copy of the school's policy for supporting pupils at school with medical conditions for your information. A central requirement of the policy is for an individual healthcare plan to be prepared, setting out what support the each pupil needs and how this will be provided. Individual healthcare plans are developed in partnership between the school, parents, pupils, and the relevant healthcare professional who can advise on your child's case. The aim is to ensure that we know how to support your child effectively and to provide clarity about what needs to be done, when and by whom. Although individual healthcare plans are likely to be helpful in the majority of cases, it is possible that not all children will require one. We will need to make judgements about how your child's medical condition impacts on their ability to participate fully in school life, and the level of detail within plans will depend on the complexity of their condition and the degree of support needed.

A meeting to start the process of developing your child's individual health care plan has been scheduled for xx/xx/xx. I hope that this is convenient for you and would be grateful if you could confirm whether you are able to attend. The meeting will involve [the following people]. Please let us know if you would like us to invite another medical practitioner, healthcare professional or specialist and provide any other evidence you would like us to consider at the meeting as soon as possible.

If you are unable to attend, it would be helpful if you could complete the attached individual healthcare plan template and return it, together with any relevant evidence, for consideration at the meeting. I [or another member of staff involved in plan development or pupil support] would be happy for you contact me [them] by email or to speak by phone if this would be helpful.

Yours sincerely