



Welcome to Year 4

Class teachers: Miss Neale

Class teaching assistant: Mrs Kelly

Year 4

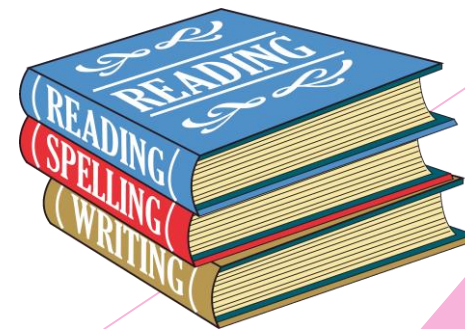
- ▶ In Year 4 the class has one main teacher - Miss Neale
 - ▶ Mrs Gerrard teaches Spanish every Wednesday morning for 45 minutes.
 - ▶ Miss Kelly will teach ICT for 1 hour every Tuesday.
 - ▶ Mrs Kelly is the classes teaching assistant and is in class everyday.
- ▶ We have incredibly busy days in Year 4 and are currently covering the whole curriculum with an extra focus on gaps that have been missed due to COVID.

Further information

- ▶ P.E is on a Monday and Thursday. Children are changing into P.E kits and we ask for these to stay in school all week to ensure they always have everything they need.
- ▶ All children must have a reading book in school daily with their green homework/reading diary.
- ▶ We sign homework diaries on a Friday. Please sign your child's on a Thursday evening to advise us of their home reading that week.
- ▶ If you require a longer conversation with us please email the office to make an appointment. We will call you at a suitable time.
- ▶ Changes to collection arrangements/absences need to be emailed to the office
- ▶ Please follow our school twitter @OurLady_Hitchin for updates and photos!



- ▶ Every day we will read our class reader for at least 15 minutes. This is to allow the children to be engrossed in a story, start to hear higher level vocabulary in context and have whole class discussions. A list of the class readers is on the website on the English curriculum page.
- ▶ We will be reinforcing grammar, spelling and speaking in standard English daily in our lessons.
- ▶ We will be learning from a range of texts and sources this term. We will be looking at short stories, poetry and non fiction texts.
- ▶ There will be a big focus on using higher level vocabulary and punctuation whilst writing. Reading higher level texts will support this!
- ▶ Spelling tests are every Wednesday.



M a t h s

- ▶ This term we are focussing on reinforcing core mathematical skills, addressing any common misconceptions and closing gaps in learning.
- ▶ We will have a large focus on number fluency, recall of key number facts and using larger numbers to add, subtract, divide and multiply.
- ▶ Our calculation policy ([found here](#)) is a great tool to use to support your children at home by using the methods we use in school.
- ▶ My Maths, Hit the Button, TT Rockstars and espresso are fantastic to use at home to support learning.
- ▶ Times table tests are every Wednesday.
- ▶ At the end of year 4, all students are required to take the government issued Multiplication Tables Check (MTC). On Wednesday 28th September the students will be participating in a Baseline times table test. This will cover the 2, 3, 4, 5, 8 and 10 times tables. This test will allow us to gain a clearer understanding of each child's current level so that they can be assigned times table work accordingly.

Adding decimals with the same number of decimal places

$7.75 + 2.46 =$

Tens	Ones	Tenths	Hundredths
7	7	5	
2	4	6	

Hundreds Tens Ones

1 unit=1

1 group of 100=100 3 groups of 10=30

The wider curriculum

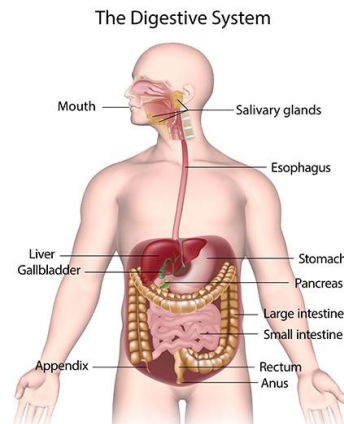
Science

In science this term we will be learning all about electricity followed by the digestive system and teeth.



Art/DT

In art and DT we will be designing and creating our own money containers out of a range of materials as well as learning all about British pantomimes.



History and Geography

We will send home a knowledge organiser full of information about each history and geography unit. These are great to share with your children to enhance their learning in school.

Our topics are *the Maya* and *Our European Neighbours*.



The wider curriculum

RE

In RE we are learning about the book of Genesis from the Bible with a focus on the creation stories.

Music

In music we will be continuing to follow the Charanga scheme.

PE

We will be learning the skills and rules of basketball during our outdoor PE sessions. Indoors we are learning all about different gymnastic movements.

ICT

In ICT this term we will be learning all about word processing and effective searching.



PSHE

In PSHE we will focus on settling the children back into school, addressing any anxieties and changes that are happening and due to happen. We will also be focusing on goal setting and thinking positively.

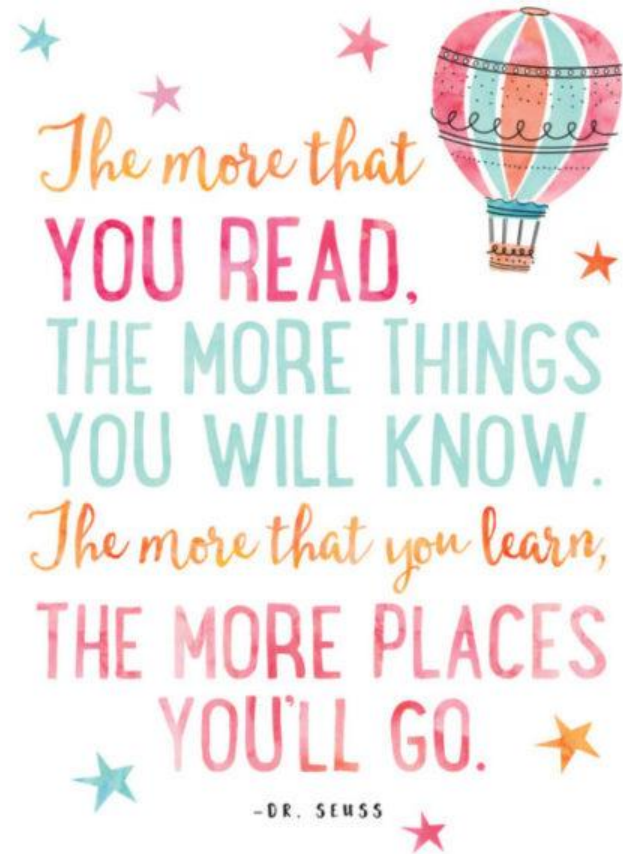




Homework

- ▶ Homework is set on Seesaw on a **Friday** and is due in the following **Wednesday**.
- ▶ Any late pieces of homework will not be marked until the following week.
- ▶ If homework is challenging or there is an exceptional circumstance and it is not completed please either write a short note in your child's homework book or send us an email. We will always help during school time if we can.
- ▶ Alongside the homework set we expect all children to be reading for at least **20 minutes a day** and recording this in their red homework diary.
- ▶ We also expect children to be practicing their times tables and spellings at least three times a week.

Reading at home



- ▶ Here are a few websites to look at to see if the book your child is reading is age appropriate and challenging for their age.
 - ▶ <https://www.booksfortopics.com/year-5>
 - ▶ <https://www.thereaderteacher.com/>
 - ▶ <https://schoolreadinglist.co.uk/reading-lists-for-ks2-school-pupils/suggested-reading-list-for-year-5-pupils-ks2-age-9-10/>